

Limited Warranty

Condux International, Inc. extends the following warranty to the original purchaser of these goods for use, subject to the qualifications indicated:

Condux International, Incorporated warrants to the original purchaser for use that the goods or any component thereof manufactured by Condux International will be free from defects in workmanship for a period of one year from the date of purchase, provided such goods are installed, maintained, and used in accordance with Condux's written instructions.

Components not manufactured by Condux International but used within the assembly provided by Condux International are subject to the warranty period as specified by the individual manufacturer of said component, provided such goods are installed, maintained, and used in accordance with Condux's and the original manufacturer's written instructions.

Condux's sole liability and the purchaser's sole remedy for a failure of goods under this limited warranty, and for any and all claims arising out of the purchase and use of the goods, shall be limited to the repair or replacement of the goods that do not conform to this warranty.

To obtain repair or replacement service under the limited warranty, the purchaser must contact the factory for a Return Material Authorization (RMA). Once obtained, send the RMA along with the defective part or goods, transportation prepaid, to:

Condux International, Inc.
145 Kingswood Road
Mankato, MN 56001

THERE ARE NO EXPRESS WARRANTIES COVERING THESE GOODS OTHER THAN AS SET FORTH ABOVE. THE IMPLIED WARRANTIES OR MERCHANTABILITY AND FITNESS FOR A PARTICULAR PURPOSE ARE LIMITED IN DURATION TO ONE YEAR FROM DATE OF PURCHASE.

CONDUX ASSUMES NO LIABILITY IN CONNECTION WITH THE INSTALLATION OR USE OF THIS PRODUCT, EXCEPT AS STATED IN THIS LIMITED WARRANTY. CONDUX WILL IN NO EVENT BE LIABLE FOR INCIDENTAL OR CONSEQUENTIAL DAMAGES.



CONDUX

Condux International, Inc. • P.O. Box 247 • 145 Kingswood Road • Mankato, MN 56001
507-387-6576 • 800-533-2077 • FAX 507-387-1442
Internet: <http://www.condux.com>

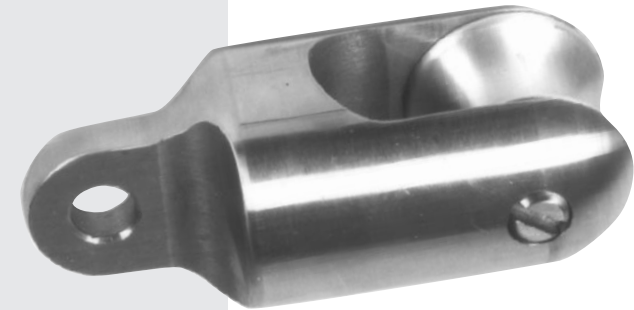
© Copyright 1996, Condux International, Inc.
Printed in USA
Literature Part Number: 08091298
Revision Number: 1.1

USER GUIDE

USER GUIDE

USER GUIDE

Rope to Swivel Clevis



CONDUX

Installation Procedure

NOTE: Use only with an 808 Champion swivel of the same size.

1. Use the correct size Rope-to-Swivel Clevis (see Table 1).
2. Unscrew the **clevis pin** from the 808 Champion swivel and use it to attach the **eye** of the **Rope-to-Swivel Clevis**. Retighten the **clevis pin** securely with a straight-slot screwdriver.
3. Remove the **sheave pin** and **sheave** from the **Rope-to-Swivel Clevis**. Place the **sheave** in the rope's eye splice*, and reinstall the **sheave** and **clevis pin**.

*An eye splice maintains 90% of a rope's strength, whereas any knot decreases a rope's strength by 50%.

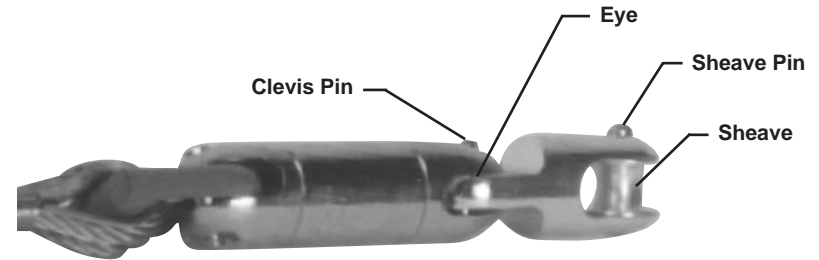


Figure 1. Rope to Swivel Clevis Connection

Removal Procedure

1. Removal is the opposite of the installation procedure.

Clevis Part Number	808 Swivel Part Number	Size (In)	Max O.D. (In)	Load Rating (lbs.)
08091212	08080912	1 1/4"	2"	4000
08091213	08080913	1 3/8"	2"	6500
08091216	08080916	1 5/8"	2"	8500
08091220	08080920	2"	2"	10000

Table 1. Rope to Swivel Clevis



!WARNING: Read and understand all procedure and safety instructions before using any Condux® Rope to Swivel Clevis. Failure to do so may result in personal injury or property damage. Save this user's guide for future reference.



!ADVERTENCIA: Favor de leer y comprender todas las instrucciones de operación y seguridad antes de usar el Condux® Rope to Swivel Clevis. Si Ud. no comprende las instrucciones favor de consultarle a su jefe.



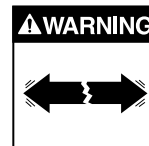
!CAUTION: Wear personal protective equipment: hard hat, safety glasses, safety shoes, and leather work gloves. Failure to do this could result in personal injury



!WARNING: The Condux Rope to Swivel Clevis is for cable stringing or pulling only. Do not use it for any other purpose or severe personal injury and property damage could result.



!WARNING: Do not stand directly behind the pull string. If any component breaks, severe personal injury or property damage could result.



!WARNING: Do not exceed the load capacity of the Condux Rope to Swivel Clevis or any element in the pull string. Severe personal injury or property damage could result.