

## Engineering is the Difference

A central part of our manufacturing process is our Engineering capability. We have a fully staffed engineering team that designs all of the Condux products using Pro/ENGINEER and Pro/MECHANICA design software. All products are tested at our factory or by a third party testing firm. This ensures our customers are getting the safest and most reliable products on the market today.

## Condux Engineering Capabilities

The capabilities of The Condux Engineering Team are comprised of the following:

- The Condux Engineering Team utilizes Pro/ENGINEER and Pro/MECHANICA software to design quality products manufactured by Condux International, Inc.
- Using the Pro/ENGINEER software's 3D capabilities, The Condux Engineering Team is able to validate design fits and design weights.
- The Condux Engineering Team further utilizes Pro/ENGINEER and Pro/MECHANICA software to verify design strength. This allows them to optimize the design for minimum weight and mechanical performance.
- The Condux Engineering Team has experience in Electrical and Hydraulic design and utilizes these in product design.

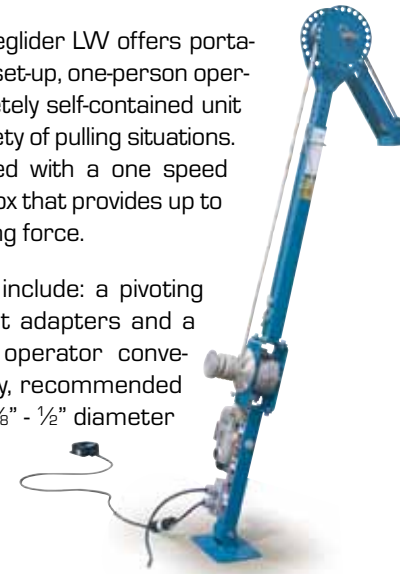


# ADDITIONAL CONDUX PRODUCTS

## Cableglider® LW

The Condux Cableglider LW offers portability and ease of set-up, one-person operation, in a completely self-contained unit to adapt to a variety of pulling situations. It comes equipped with a one speed motor and gearbox that provides up to 3,000 lbs of pulling force.

Design features include: a pivoting arm, split conduit adapters and a foot switch for operator convenience and safety, recommended to be used with 3/8" - 1/2" diameter rope.



## Swivel Head Innerduct Pulling Eye

The Innerduct Pulling Eye is a hybrid tool that combines features from standard innerduct pulling eyes and Condux swivels. A swivel head prevents twisting and binding of the innerduct as it is installed. It eliminates the need for a separate swivel on each pulling eye when installing single innerducts into individual conduits or multiple innerducts into a single conduit. Its short length is an advantage on tight bends compared to using a separate swivel and pulling eye. Easily installed using a 1 3/8" deep socket or adjustable wrench.



## The Condux Winch Line Blower

The Condux Winch Line Blower is a method of installing winch line in conduit. It turns the job of pulling winch line into one easy step, eliminating the need to blow a string and pull back a rope.

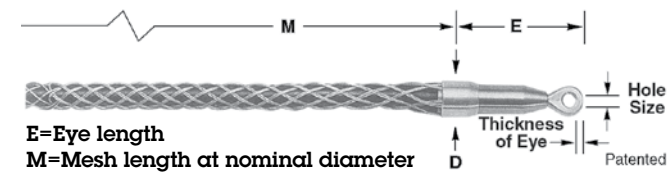
Using compressed air, 45 psi and 100 cfm, the winch line blower can propel 3/16" steel winch line, or 3/16" rope up to 1,600 feet, depending on job conditions, in conduit from 4" to 6" in diameter.

Installation is easy. No special tools are required. The blowers seal off slides into the duct and is held in place by handtightening the adjustment handles.



## Fiber Optic Grip - Swivel Eye

Double/Single weave mesh, galvanized steel for outside plant cable. Used for the installation of fiber optic communication lines either underground, overhead, through conduit or through enclosures. They will fit single cables or cable bundles, are easily installed on the cable and are reusable.



## Complete Cable Installation Guide



The 172 page catalog contains over 600 photographs and illustrations depicting a wide range of underground and aerial products and applications. Let Condux make your next cable installation job faster, easier and safer.

**CONDUX INTERNATIONAL, INC.**  
 145 Kingswood Drive • PO Box 247 • Mankato, MN 56002-0247 U.S.A.  
 1.507.387.6576 • 1.800.533.2077 (U.S. & Canada) • FAX 1.507.387.1442  
 e-mail: cndxinfo@condux.com • www.condux.com

Available From

SAFETY • RELIABILITY • PRODUCTIVITY

# CONDUX Ball Bearing Swivels champion swivels



**CONDUX**

ISO 9001:2000  
 CERTIFIED

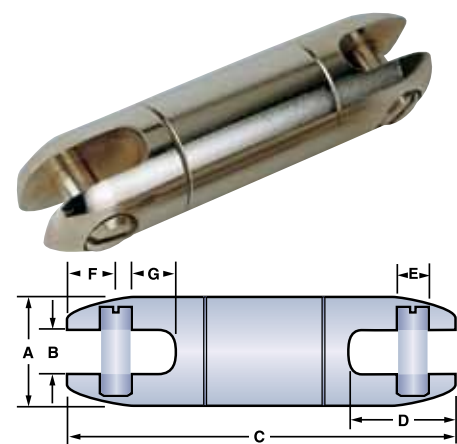


## 808 Champion Swivels

Designed specifically for underground and overhead cable pulling applications. Can handle all types of utility cables. Precision machined from high-strength stainless steel.

**CAUTION:** 808 Champion Swivels are to be used for cable stringing or pulling only. 808 Champion Swivels are not to be used for directional drilling.

**NOTE:** Swivels are not designed to run around bullwheels. Always verify that the swivel size is sized to the pulling harness or grip prior to ordering.



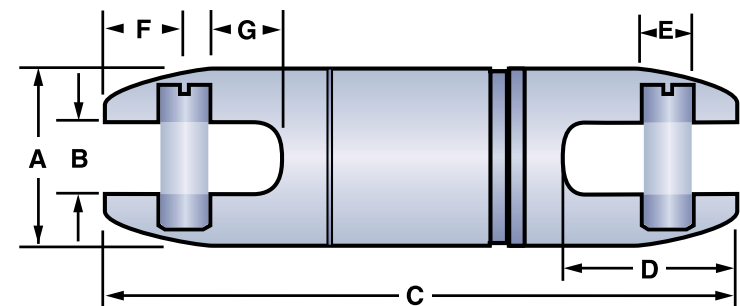
Part Number	Working Load		Aerial (N)	A (mm)	B (mm)	C (mm)	D (mm)	E (mm)	F (mm)	G (mm)								
	Underground (lbs.)	Underground (N)																
08017000	600	2,669	360	1,601	7	3.56	90	.79	20	.25	6	.37	9	.295	7			
08016000	2,500	11,120	1,500	6,672	7	22	.38	10	4.51	115	1.06	27	.31	8	.53	13	.375	10
08016000H***	2,500	11,120	1,500	6,672	7	22	.38	10	4.51	115	1.06	27	.31	8	.53	13	.375	10
08080912	5,000	22,241	3,000	13,344	14	32	.56	14	5.44	138	1.34	34	.37	9	.59	15	.565	14
08080912H***	5,000	22,241	3,000	13,344	14	32	.56	14	5.44	138	1.34	34	.37	9	.59	15	.565	14
08080913	7,000	31,137	4,200	18,682	14	35	.56	14	5.25	133	1.31	33	.44	11	.56	14	.530	13
08080913H***	7,000	31,137	4,200	18,682	14	35	.56	14	5.25	133	1.31	33	.44	11	.56	14	.530	13
08080916	10,000	44,482	6,000	26,689	14	41	.63	16	6.51	165	1.59	40	.56	14	.78	20	.530	13
08080916H***	10,000	44,482	6,000	26,689	14	41	.63	16	6.51	165	1.59	40	.56	14	.78	20	.530	13
08080920	15,000	66,723	9,000	40,033	2	51	.75	19	6.99	178	1.78	45	.62	16	.72	18	.750	18
08080920H***	15,000	66,723	9,000	40,033	2	51	.75	19	6.99	178	1.78	45	.62	16	.72	18	.750	18
08080925	25,000	111,205	15,000	66,723	2	64	1.00	25	10.23	260	2.80	71	.87	22	1.23	31	1.135	29
08080925H***	25,000	111,205	15,000	66,723	2	64	1.00	25	10.23	260	2.80	71	.87	22	1.23	31	1.135	29
08080930	30,000	133,446	18,000	80,068	3	76	1.31	33	12.04	306	3.56	90	1.12	28	1.37	35	1.630	41

\* 3:1 Safety Factor  
\*\* 5:1 Safety Factor  
\*\*\* Comes standard with hex head clevis pin



## 821 Champion Swivels

Designed to meet common dimensional specifications, the 821 Champion Swivels are designed for underground and overhead cable pulling applications and can handle all types of utility cable. Precision machined stainless steel.



**CAUTION:** 821 Champion Swivels are to be used for cable stringing or pulling only.

**NOTE:** Swivels are not designed to run around bullwheels.

Part Number	Working Load		Aerial (N)	A (mm)	B (mm)	C (mm)	D (mm)	E (mm)	F (mm)	G (mm)								
	Underground (lbs.)	Underground (N)																
08210007	1,800	8,006	1,080	4,804	7	22	.31	8	3.09	78	.84	21	.31	8	.38	10	0.305	8
08210012	4,000	17,792	2,400	10,675	14	32	.59	15	4.52	115	1.22	31	.38	10	.44	11	0.410	10
08210014	7,500	33,360	4,500	20,016	14	37	.59	15	5.13	130	1.41	36	.44	11	.59	15	0.600	15
08210018	10,000	44,480	6,000	26,689	14	48	.75	19	7.06	179	1.88	48	.63	16	.81	21	0.755	19

\* 3:1 Safety Factor  
\*\* 5:1 Safety Factor

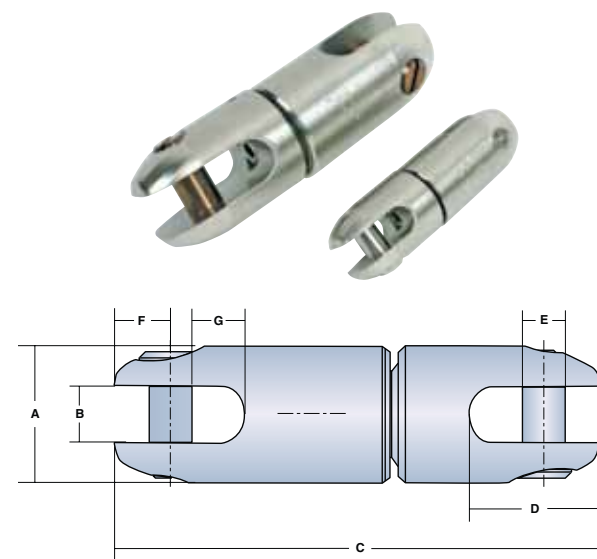
## 210 Champion Swivels

The Condux 210 Champion Swivels are designed for underground and overhead cable pulling applications. Can handle all types of utility cables. The special design can bear the high radial loads, which occur during the passage over sheaves.

### Features and Benefits:

- Flexes to relieve stress on swivel flanges when being pulled over a sheave
- Stainless steel construction
- Multiple sizes and load ratings
- Rubber seal to protect bearings from contaminants

**CAUTION:** 210 Champion Swivels are to be used for cable stringing or pulling only.



Part Number	Working Load		Aerial (N)	A (mm)	B (mm)	C (mm)	D (mm)	E (mm)	F (mm)	G (mm)						
	Aerial (lbs.)	Aerial (N)														
21000405	3,000	13,344	1,338	35	.56	14	4.88	124	1.31	33	.43	11	.56	14	.54	14
21000370*	3,000	13,344	1,338	35	.56	14	4.88	124	1.31	33	.43	11	.56	14	.54	14
21000415	5,000	22,241	1,633	41	.63	16	5.38	137	1.59	40	.56	14	.78	20	.54	14
21000380*	5,000	22,241	1,633	41	.63	16	5.38	137	1.59	40	.56	14	.78	20	.54	14
21000435	11,000	48,930	2,000	51	.75	19	6.41	163	1.78	45	.62	16	.72	18	.76	19
21000390*	11,000	48,930	2,000	51	.75	19	6.41	163	1.78	45	.62	16	.72	18	.76	19
21000445	15,000	66,723	2,500	64	1.00	25	8.60	218	2.80	71	.87	22	1.23	31	1.15	29

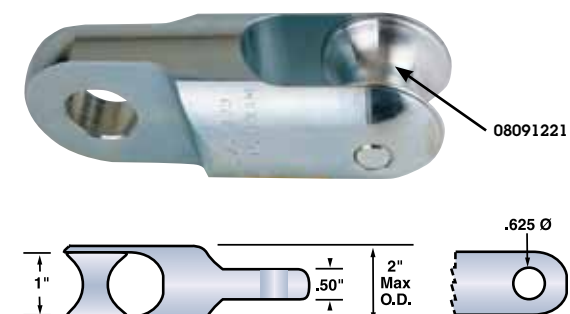
**NOTE:** Working loads are based on a 5:1 factor of safety.  
\* Comes standard with hex head clevis pin.

## Rope to Swivel Clevis Accessory

Used to connect the swivel to rope up to 1" (25 mm) in diameter. To be used with 1 1/4", 1 1/2", 1 3/8" & 2" 808 Champion Swivels. Precision machined stainless steel.

Part Number	Size		Max O.D. (mm)	Load Rating (lbs.)	Load Rating (N)	
	(in)	(mm)				
08091230	1 1/4"	32.51	2	51	10,000	44,480

Replacement Roller:  
Part Number  
08091221



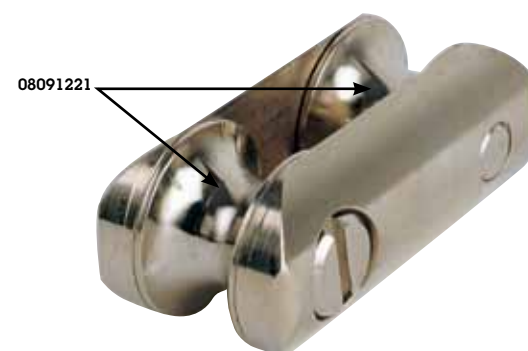
## Rope to Rope/Grip Clevis Accessory

Versatile clevis provides efficient link for several applications. Stainless steel construction with 10,000 lbs. (44,480 N) load capacity. Combinations of sheaves and pins allow the following connections:

- 7/8" (22 mm) diameter rope to 7/8" (22 mm) diameter rope
- Rope to forged eye pulling grip
- Forged eye pulling grip to forged eye pulling grip
- Rope to flexible eye pulling grip

Part Number	Max O.D.	
	(in)	(mm)
08091200	1 1/4"	44

Replacement Roller:  
Part Number  
08091221



## Why Choose Condux Ball Bearing Swivels

Condux Ball Bearing Swivels are designed to the highest specifications for underground and overhead pulling applications. All swivels are tested and inspected to ISO9001:2000 quality standards. This ensures the customer is getting the most reliable and safest swivel on the market.

All swivels are precision machined from high grade stainless steel. Clevis pins are heat treated to prevent pin damage when using steel shackles. Each swivel is manufactured with three angular contact or deep groove ball bearings which allow the swivel to rotate beyond its rated load. Most manufacturers use only one bearing to handle the load, causing the swivels to stop rotating before it reaches the recommended workload.

Swivels are designed to pass through a sheave but may not be pulled around a bullwheel or capstan.

The Condux 210 champion swivels flex to relieve stress on swivel flanges when being pulled over a sheave. The 210 champion swivels are the number one choice for aerial installations.

